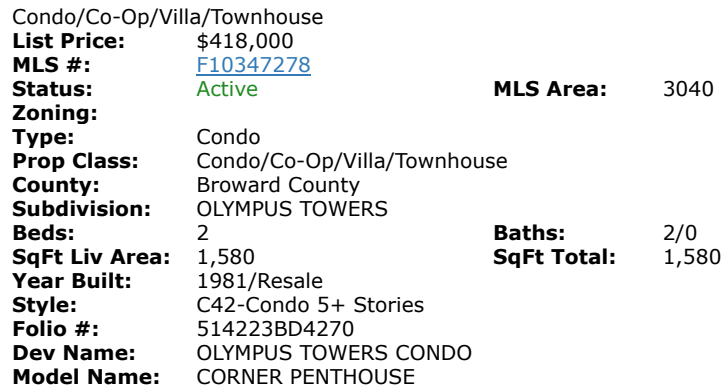




**2500 Parkview Dr # 2514-PH Hallandale Beach, FL 33009**



**Virtual Tour:** <https://www.propertypanorama.com/2500-Parkview-Dr-Unit-2514-ph-Hallandale-Beach-FL-33009/unbranded>

**Directions:** Take I-95 to Hallandale Beach Blvd Exit. Proceed East past US-1; Turn Left at Traffic Light on to Three Islands Blvd; Proceed North. Turn Right at Traffic Light on to Parkview Drive; Proceed East to 2500 Olympus Towers; Proceed Up Hill to Valet Parking.

## General Information

|                       |  |                         |             |
|-----------------------|--|-------------------------|-------------|
| <b>HOPA:</b>          | No HOPA  | <b>Faces:</b>           |             |
| <b>REO:</b>           | No   | <b>Lender Apprv:</b>    |             |
| <b>Builder Name:</b>  |  | <b>Proj Comp Date:</b>  |             |
| <b>Comm Dev Dist:</b> |  | <b>Amt Annually:</b>    |             |
| <b>Waterfront:</b>    | Yes/Canal Width 121 Feet Or More, No Fixed Bridges, Ocean Access | <b>Dock #:</b>          |             |
| <b>Water Access:</b>  | Community Boat Dock, Dock Available                              |                         |             |
| <b>Garage #/Desc:</b> | 1/Attached   | <b>Carport #/Desc:</b>  |             |
| <b>Furnished:</b>     | Furniture Negotiable   | <b># Ceiling Fans:</b>  | 3           |
| <b>Parking:</b>       | 1 Space, Covered Parking, Valet Parking                          | <b>Parking Rstrct:</b>  |             |
| <b>Flooring:</b>      | Carpeted Floors, Tile Floors                                     |                         |             |
| <b>Construction:</b>  | Cbs Construction   | <b>Lot Desc:</b>        |             |
|                       |  | <b>Apx Lot Size:</b>    |             |
|                       |  | <b>Build Lot/Unit#:</b> |             |
|                       |  |                         |             |
|                       |  | <b>Main Liv Area:</b>   | Entry Level |

## Rooms

**Convert Bed:** No Efficiency: No  
**Bedroom:** Entry Level, Other  
**Master Bath:** Bidet, Combination Tub & Shower, Whirlpool/Spa  
**Rooms:** Other  
**Dining:** Dining/Living Room, Eat-In Kitchen

|             |            |             |            |               |            |               |            |
|-------------|------------|-------------|------------|---------------|------------|---------------|------------|
| <u>Room</u> | <u>Dim</u> | <u>Room</u> | <u>Dim</u> | <u>Room</u>   | <u>Dim</u> | <u>Room</u>   | <u>Dim</u> |
| LivingRoom  | 14' x 31'  | Kitchen     | 10' x 16'  | MasterBedroom | 14' x 16'  | SecondBedroom | 12' x 16'  |
| Patio       | 6' x 14'   |             |            |               |            |               |            |

### Additional Information

|                        |  |                     |     |
|------------------------|--|---------------------|-----|
| <b>Pets:</b>           | Yes/Cats Only, No Dogs, Number Limit, Size Limit   | <b>Cable Avail:</b> | Yes |
| <b>Interior:</b>       | Bar, Built-Ins, Elevator, Foyer Entry, Pantry, Walk-In Closets, Wet Bar  |                     |     |
| <b>Equip/Appl:</b>     | Dishwasher, Disposal, Electric Range, Electric Water Heater, Elevator, Fire Alarm, Microwave, Refrigerator   |                     |     |
| <b>Windows:</b>        | Drapes & Rods  | <b>Sprinkler:</b>   |     |
| <b>Exterior Feat:</b>  | Barbeque, Courtyard, Tennis Court  |                     |     |
| <b>Maint Includes:</b> | All Amenities, Building Exterior, Cable Tv, Common Area, Elevator, Landscaping/Lawn Maintenance, Manager, Parking, Pool Service, Recreation Facilities, Roof Repairs, Security, Trash Removal, Water |                     |     |
| <b>Heating:</b>        | Reverse Cycle  |                     |     |
| <b>Cooling:</b>        | Ceiling Fans, Central Cooling  |                     |     |
| <b>Restrictions:</b>   | Ok To Lease, Renting Limited   |                     |     |

## Condo

|                       |   |                        |     |                        |    |                        |     |
|-----------------------|---|------------------------|-----|------------------------|----|------------------------|-----|
| <b>Building #:</b>    | 2500  | <b>Unit Floor:</b>     | 25  | <b>Total Floors:</b>   | 25 | <b># Bldg Units:</b>   | 434 |
| <b># Cmplx Units:</b> | 1,090   | <b>Min # days Lse:</b> | 184 | <b># Times Lsd/Yr:</b> | 1  | <b># Interior Lev:</b> | 1   |
| <b>Parking Sp #:</b>  | 1153  |                        |     |                        |    | <b>Balc/Prch/Pat:</b>  | Yes |
| <b>Unit Design:</b>   | Corner Unit, High Rise, Penthouse             |                        |     |                        |    |                        |     |
| <b>Unit View:</b>     | Pool Area View, Tennis Court View, Water View |                        |     |                        |    |                        |     |
| <b>Security:</b>      | Doorman, Other Security                       |                        |     |                        |    |                        |     |



**Amenities:** Bbq/Picnic Area, Billiard Room, Clubhouse-Clubroom, Common Laundry, Courtesy Bus, Fitness Center, Heated Pool, Library, Marina, Pool, Sauna, Shuffleboard, Tennis, Vehicle Wash Area  
**Approval Info:** 3-4 Weeks Approval, Application Fee Required, Association Approval Required  
**Complex Name:** OLYMPUS TOWERS **Govern Bodies:** Condominium

---

**Financial Information**

---

**Taxes:** \$3,821/2022 **Tax Info:** Tax Reflects Homestead Tax  
**Terms:** Cash, Conventional  
**Type Assoc:** Condo/\$985/Monthly  
**Maint/Land/Rec Fees:** 985/\$/0

**Assumable:**  
**Mbr Req/Fee:** No

**Customer Full**

01/11/2023 11:46:33 PM



**MLS #: F10347278**

**List Price: \$418,000**



**Olympus Tower Exterior & Clubhouse**



**Olympus Towers Clubhouse**



**Olympus Tower Exterior & Pool Area**



**Olympus Towers Pool Area**



**Olympus Towers Pool Area**



**Olympus Towers Clubhouse**



**Olympus Towers Fitness Center**



**Olympus Towers Fitness Center**



**Olympus Towers Fitness Center**



**Olympus Towers Fitness Center**



**Olympus Towers Fitness Center**



**Olympus Towers Fitness Center**



**Olympus Towers Fitness Center & Pool View**



**Olympus Towers Locker Room**



**Olympus Towers Sauna**



**Olympus Towers Sauna**



**Olympus Towers Sauna**



**Olympus Towers Showers**



**Olympus Towers Billiards Room**



**Olympus Towers Billiards Room**



**Olympus Towers Library**



**Olympus Towers Palm Room**



**Olympus Towers Palm Room**



**Olympus Towers Tennis Courts**



**Olympus Towers Shuffle Board Courts**



**Olympus Towers BBQ Area**



**Olympus Towers Car Wash Area**



**Olympus Tower Lobby Entrance**



**Living / Dining Room Area**

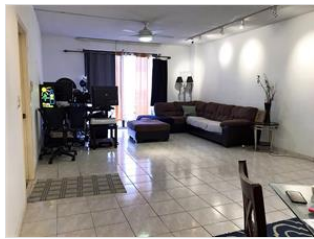


**Living / Dining Room Area**





**Wet Bar in Living / Dining Room Area**



**Living / Dining Room Area**



**Eat-In Kitchen with Glass Door Pantry & Storage Closet**



**Eat-In Kitchen with Black Tiled Counter & Pass-Through Window**



**Eat-In Kitchen with Stainless Steel Appliances**



**Eat-In Kitchen with Stainless Steel Appliances**



**Balcony**



**Balcony**



**View From Balcony Of City**



**View From Balcony Of City & Guitar Hotel**



**View From Balcony Of Tennis Courts**



**View From Balcony Of Marina Area**



**View From Balcony Of Marina Area**



**View From Balcony Of Marina Area**



**View From Balcony Of Marina & Pool Area**



**View From Balcony Of Marina & Pool Area**



**View From Balcony Of Marina & Pool Area**



**View From Balcony Of Marina & Pool Area**



**View From Balcony Of Marina & Pool Area**



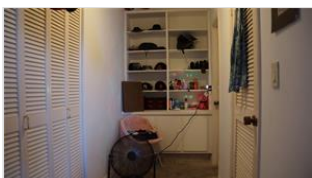
**View From Balcony Of Marina, Pool & Clubhouse Area**



**Primary Bedroom with Dual Closets**



**Primary Bedroom with Dual Closets**



**Primary Bedroom Dressing Area**



**Primary Bedroom Walk-In Closet**



**Primary BR Bathroom with Bidet & Spa Tub/Shower**



**Primary BR Bathroom with Bidet**





**Primary BR Bathroom with Bidet & Spa Tub/Shower**



**Primary BR Bathroom with Bidet & Spa Tub/Shower**



**Second Bedroom with Dual Closets**



**Second Bedroom with Dual Closets**



**Second Bathroom**



**Second Bathroom**



**Second Bathroom**



**New Air Conditioning Unit Installed September 2022**



**New Air Conditioning Unit Installed September 2022**



**View From Bedroom Windows**



**View From Bedroom Windows**



**Marina Area**



**Marina Area**



**Marina Area**



**Marina Area**



**View From Marina Area**



**View From Marina Area**



**View From Marina Area**



## Supplement

This Spacious Luxury Condominium Is Priced For A Quick Sale That You Can Renovate to Your Own Taste!! See It Today For It Will Go Fast At This Price!!! Unbelievable Views From Every Window That You Will Love Both During the Day and Evening!! Perfect For Entertaining Too!! Assessment Has Been Fully PAID Off!! Furniture May Be Included In Sale Too! Available AS-IS.

*The Information is deemed to be reliable, but is not guaranteed. ©2023 Beaches MLS, Inc. Listing information is provided for consumer personal, non-commercial use, solely to identify potential properties for potential purchase; all other use is strictly prohibited and may violate relevant federal and state law. **Accessibility Issues?** We are committed to providing an accessible website. If you have difficulty accessing content or notice any accessibility problems, please contact our ADA hotline at **844-209-0134** and we will strive to provide the information you need in the format you require.*

---

Rocco A. Quaglia | Regency Realty Services | [RoccoRealtor@att.net](mailto:RoccoRealtor@att.net) | [www.FloridaFineHomesAndEstates.net](http://www.FloridaFineHomesAndEstates.net)