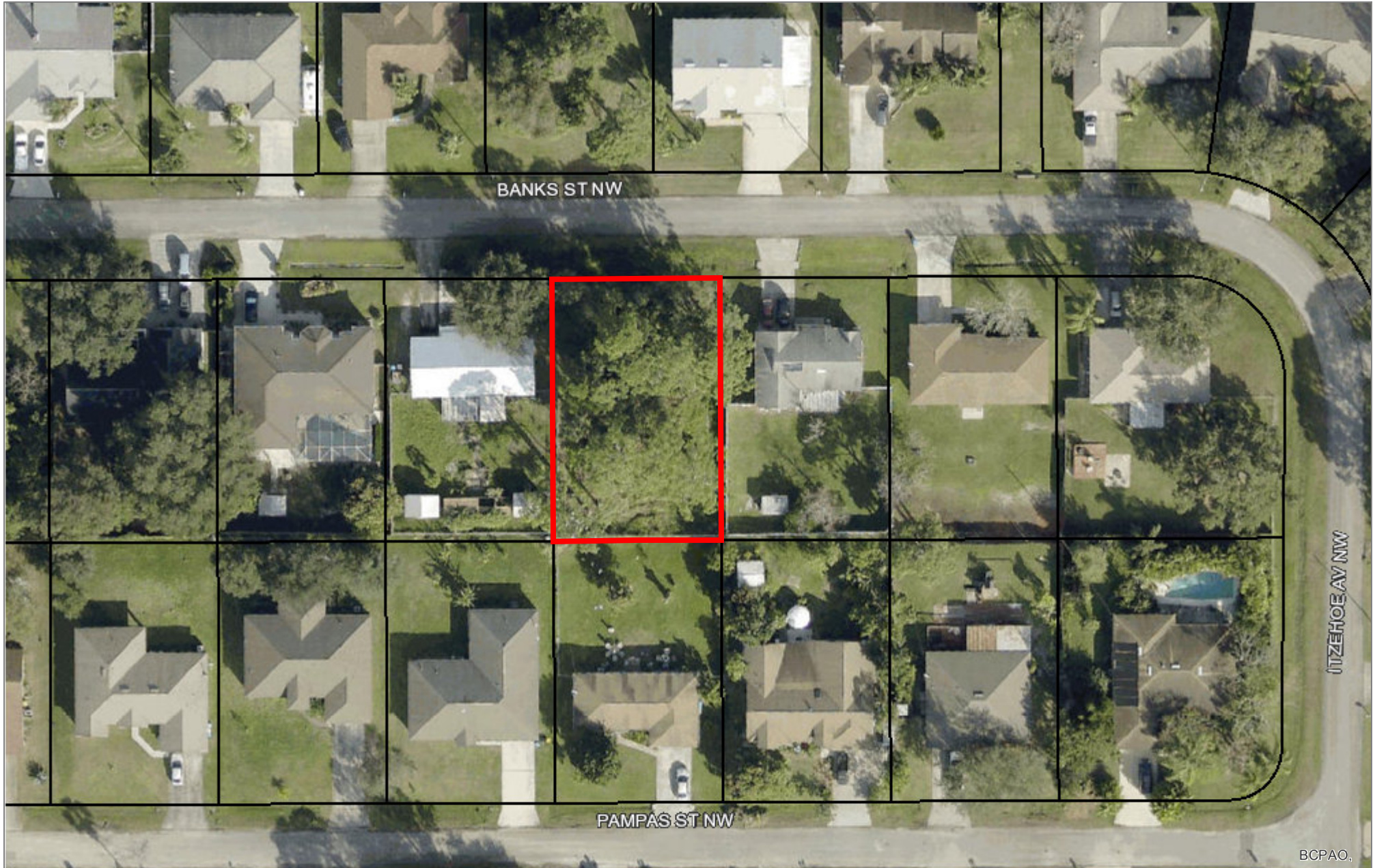
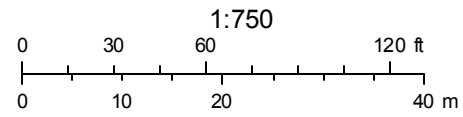




Dana Blickley, CFA
Brevard County Property Appraiser



BCPAO.

All BCPAO maps and/or map applications are maintained for assessment and illustrative purposes only and do not represent surveys, plats, or any other legal instrument. Likewise, measurement and location tools are for assessment and illustrative purposes only and do not necessarily reflect real-world conditions. Due to the nature of Geographic Information Systems (GIS) and cadastral mapping, map layers may not precisely align and may not represent precise location, shape, and/or legal boundaries. Only a Florida-licensed surveyor can determine legally-relevant property boundaries, elevation, distance, area, and/or location in Florida.

Map created March 8, 2021 (map data dates may vary)